

# Official Primary Ballot

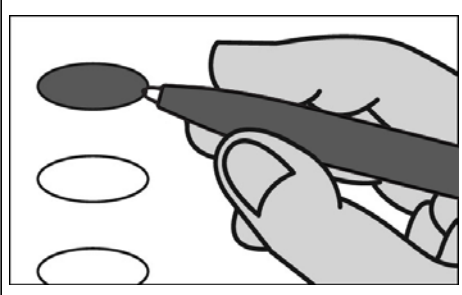
## Partisan Office

### August 11, 2020

S1

**Notice to Voters:** If you are voting on Election Day, your ballot must be initialed by two (2) election inspectors. If you are voting absentee, your ballot must be initialed by the municipal clerk or deputy clerk. Your ballot may not be counted without initials. (See end of ballot for initials.)

### General Instructions



If you make a mistake on your ballot or have a question, ask a poll worker for help. (Absentee voters: Contact your municipal clerk.)

To vote for a name on the ballot, fill in the oval next to the name like this: ●.

To vote for a name that is not on the ballot, write the name on the line marked "write-in," and fill in the oval next to the name like this: ●.

### Special Instructions for Voting in a Partisan Primary

**In the Partisan Primary:**

- You may vote in only ONE party's primary.
- If you choose a party, votes cast in that party will be counted. Votes cast in any other party will not be counted.
- If you do not choose a party, and you vote in more than one party, no votes will be counted.

**You must vote for individual candidates.**

### Party Preference Section

**Choose a party in which to vote.**

Fill in the oval next to your party choice, like this: ●. **Choose only ONE.**

Democratic

Republican

Constitution

SAMPLE

Democratic Primary begins at top of next column.

### Democratic Party Primary

*If you vote in this party's primary, you may not vote in any other party's primary.*

#### Congressional

**Representative in Congress District 2**  
Vote for 1

- Mark Pocan  
 write-in

#### Legislative and State

**Representative to the Assembly District 45**  
Vote for 1

- Mark Spreitzer  
 write-in

**District Attorney**  
Vote for 1

- David J. O'Leary  
 write-in

#### County

**County Clerk**  
Vote for 1

- Yuri Rashkin  
 Lisa Tollefson  
 write-in

**County Treasurer**  
Vote for 1

- Michelle L. Roettger  
 write-in

**Register of Deeds**  
Vote for 1

- Sandy Disrud  
 write-in

End Democratic Party Primary

SAMPLE

Republican Primary begins at top of next column.

### Republican Party Primary

*If you vote in this party's primary, you may not vote in any other party's primary.*

#### Congressional

**Representative in Congress District 2**  
Vote for 1

- Peter Theron  
 write-in

#### Legislative and State

**Representative to the Assembly District 45**  
Vote for 1

- Tawny Gustina  
 write-in

**District Attorney**  
Vote for 1

- write-in

#### County

**County Clerk**  
Vote for 1

- write-in

**County Treasurer**  
Vote for 1

- write-in

**Register of Deeds**  
Vote for 1

- write-in

End Republican Party Primary

SAMPLE

Constitution Primary begins on the other side of ballot.



**Constitution Party Primary**

*If you vote in this party's primary, you may not vote in any other party's primary.*

**Congressional**

**Representative in Congress  
District 2  
Vote for 1**

write-in

**Legislative and State**

**Representative to the Assembly  
District 45  
Vote for 1**

write-in

**District Attorney  
Vote for 1**

write-in

**County**

**County Clerk  
Vote for 1**

write-in

**County Treasurer  
Vote for 1**

write-in

**Register of Deeds  
Vote for 1**

write-in

 **End Constitution Party Primary**

**Official Primary Ballot**  
**Partisan Office**

**August 11, 2020**  
for

T. Avon  
T. Beloit W1-3  
T. Magnolia  
T. Newark  
T. Spring Valley  
T. Union  
V. Orfordville  
C. Beloit W1  
C. Brodhead W 7-8  
C. Evansville

**Ballot issued by**  
\_\_\_\_\_  
Initials of election inspectors

**Absentee ballot issued by**  
\_\_\_\_\_  
Initials of municipal clerk or deputy clerk  
If issued by SVDs, both SVDs must initial.

**Certification of Voter Assistance**  
I certify that I marked or read aloud this ballot at the request and direction of a voter who is authorized under Wis. Stat. § 6.82 to receive assistance.  
\_\_\_\_\_  
Signature of assistor

**For Official Use Only**

**Inspectors:** Identify ballots required to be remade.  
**Reason for remaking ballot:**  
 Overvoted  
 Damaged  
 Other

If this is the **Original Ballot**, write serial number here: \_\_\_\_\_  
If this is the **Duplicate Ballot**, write serial number here: \_\_\_\_\_

\_\_\_\_\_  
Initials of inspectors who remade ballot

SAMPLE

