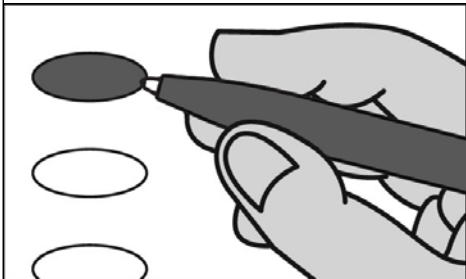


Official Ballot
Nonpartisan Office
April 4, 2017

S89

Notice to voters: If you are voting on Election Day, your ballot must be initialed by two election inspectors. If you are voting absentee, your ballot must be initialed by the municipal clerk or deputy clerk. Your ballot may not be counted without initials. (See end of ballot for initials.)

General Instructions



If you make a mistake on your ballot or have a question, ask an election inspector for help. (Absentee voters: Contact your municipal clerk.)

To vote for a name that is not on the ballot, write the name on the line marked "write-in" and fill in the oval next to the name like this: ●

State Superintendent of Public Instruction

State Superintendent
Vote for 1

- Tony Evers
- Lowell E. Holtz
- write-in:

Judicial

Justice of the Supreme Court
Vote for 1

- Annette Ziegler
- write-in:

Court of Appeals Judge, District 4
Vote for 1

- Michael R. Fitzpatrick
- write-in:

Circuit Court Judge, Branch 6
Vote for 1

- John M. Wood
- write-in:

Continue voting at top of next column.

Municipal

Aldersperson District #1
City of Evansville
Vote for 1

- write-in:

School District

Evansville Community School District
School Board Member
Vote for no more than 3

- John Rasmussen
- Melissa M. Hammann
- Thomas Titus
- write-in:
- write-in:
- write-in:

SAMPLE

