

Official Ballot

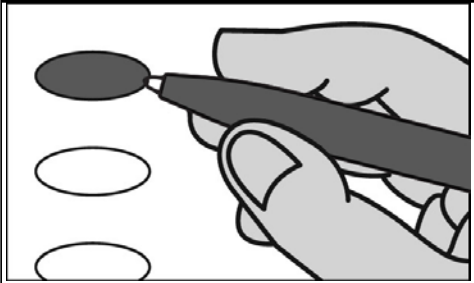
Nonpartisan Office

April 2, 2019

S89

Notice to voters: If you are voting on Election Day, your ballot must be initialed by two election inspectors. If you are voting absentee, your ballot must be initialed by the municipal clerk or deputy clerk. Your ballot may not be counted without initials. (See right column of ballot for initials.)

General Instructions



If you make a mistake on your ballot or have a question, ask an election inspector for help. (Absentee voters: Contact your municipal clerk.)

To vote for a name on the ballot, fill in the oval next to the name like this: ●

To vote for a name that is not on the ballot, write the name on the line marked "write-in" and fill in the oval next to the name like this: ●

School District

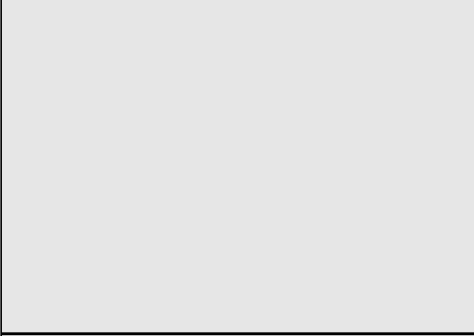
Evansville Community School District School Board Member Vote for not more than 2	
<input type="radio"/>	Jan Klaehn
<input type="radio"/>	Curt Nyhus
<input type="radio"/>	Rene S. Johnson
<input type="radio"/>	Eric Busse
<input type="radio"/>	write-in:
<input type="radio"/>	write-in:

Judicial

Justice of the Supreme Court Vote for 1	
<input type="radio"/>	Brian Hagedorn
<input type="radio"/>	Lisa Neubauer
<input type="radio"/>	write-in:
Court of Appeals Judge, District 4 Vote for 1	
<input type="radio"/>	Jennifer Nashold
<input type="radio"/>	write-in:
Circuit Court Judge, Branch 1 Vote for 1	
<input type="radio"/>	Karl Hanson
<input type="radio"/>	write-in:
Circuit Court Judge, Branch 2 Vote for 1	
<input type="radio"/>	Derrick A. Grubb
<input type="radio"/>	write-in:
Circuit Court Judge, Branch 4 Vote for 1	
<input type="radio"/>	Daniel T. Dillon
<input type="radio"/>	write-in:

Municipal

Alderman, District 1 Vote for 1	
<input type="radio"/>	Larry Dobbs
<input type="radio"/>	write-in:



Continue voting at top of next column.

<h2>Official Ballot</h2> <p>Nonpartisan Office</p> <p>April 2, 2019</p> <p>for</p> <h1>City of Evansville</h1> <h2>Ward 1-2 & 10</h2> <h3>Aldermanic District 1</h3>
<p>Ballot Issued by</p> <p>_____</p> <p>Initials of election inspectors</p>
<p>Absentee ballot issued by</p> <p>_____</p> <p>Initials of municipal clerk or deputy clerk</p> <p>If issued by SVDs, both SVDs must initial.</p>
<p>Certification of Voter Assistance</p> <p>I certify that I marked or read aloud this ballot at the request and direction of a voter who is authorized under Wis. Stat. § 6.82 to receive assistance.</p> <p>_____</p> <p>Signature of assistor</p>
<p style="text-align: center;">For Official Use Only</p> <p><i>Inspectors: Identify ballots required to be remade.</i></p> <p>Reason for remaking ballot:</p> <p><input type="checkbox"/> Overvoted</p> <p><input type="checkbox"/> Damaged</p> <p><input type="checkbox"/> Other</p> <p>Original Ballot No. or Duplicate Ballot No.</p> <p>_____</p> <p>_____</p> <p>Initials of inspectors who remade ballot</p>